

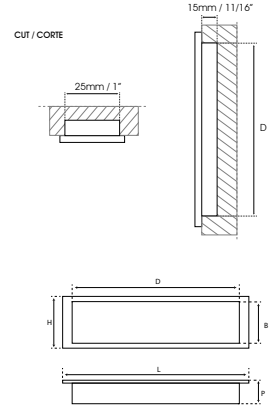
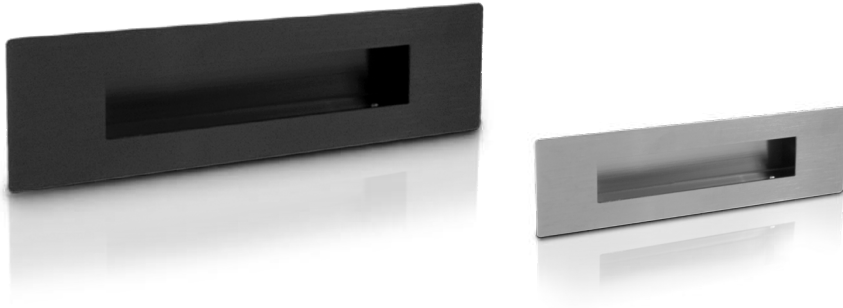


LNS
MANUFACTURING


STAINLESS STEEL
CABINET PULLS AND KNOBS
JALADERAS ACERO INOXIDABLE




J903



Material: Stainless Steel 304 - Includes cut-out screws
Material: Acero Inoxidable 304 - Incluye tornillos recortables

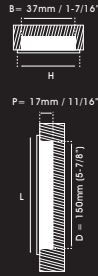
CODE / CÓDIGO	FINISH / ACABADO	L	H	P	B	D	
J903-200SS	● Satin / Satin	200mm (7-7/8")	55mm (2-3/16")	16mm (5/8")	25mm (1")	130mm (5-1/8")	2/50
J903-300SS	● Satin / Satin	300mm (11-13/16")	55mm (2-3/16")	16mm (5/8")	25mm (1")	228mm (9")	2/50
J903-400SS	● Satin / Satin	400mm (15-3/4")	55mm (2-3/16")	16mm (5/8")	25mm (1")	330mm (13")	2/50
J903-600SS	● Satin / Satin	600mm (23-5/8")	55mm (2-3/16")	16mm (5/8")	25mm (1")	533mm (21")	2/20
J903-800SS	● Satin / Satin	800mm (31-1/2")	55mm (2-3/16")	16mm (5/8")	21mm (13/16")	740mm (29-1/8")	2/20
J903-1000SS	● Satin / Satin	1000mm (39-3/8")	55mm (2-3/16")	16mm (5/8")	21mm (13/16")	936mm (36-7/8")	2/20
J903-200CSS	● Copper / Cobre	200mm (7-7/8")	55mm (2-3/16")	16mm (5/8")	25mm (1")	130mm (5-1/8")	2/50
J903-200NSS	● Black / Negro	200mm (7-7/8")	55mm (2-3/16")	16mm (5/8")	25mm (1")	130mm (5-1/8")	2/50



CODE / CÓDIGO	FINISH / ACABADO	L	H	P	B	D	
J903-200NSSMC	●● Black - Light Wood / Negro - Madera clara	200mm (7-7/8")	55mm (2-3/16")	16mm (5/8")	25mm (1")	130mm (5-1/8")	1/10
J903-200NSSMO	●● Black - Dark Wood / Negro - Madera Oscura	200mm (7-7/8")	55mm (2-3/16")	16mm (5/8")	25mm (1")	130mm (5-1/8")	1/10
J903-200PSSMC	●● Polished - Light Wood / Pulido - Madera clara	200mm (7-7/8")	55mm (2-3/16")	16mm (5/8")	25mm (1")	130mm (5-1/8")	1/10
J903-200PSSN	●● Polished - Black / Pulido - Negro	200mm (7-7/8")	55mm (2-3/16")	16mm (5/8")	25mm (1")	130mm (5-1/8")	1/10
J903-300NSSMC	●● Satin - Light Wood / Satin - Madera Clara	200mm (7-7/8")	55mm (2-3/16")	16mm (5/8")	25mm (1")	130mm (5-1/8")	1/10
J903-300NSSMC	●● Black - Light Wood / Negro - Madera clara	300mm (11-13/16")	55mm (2-3/16")	16mm (5/8")	25mm (1")	228mm (9")	1/10
J903-300NSSMO	●● Black - Dark Wood / Negro - Madera Oscura	300mm (11-13/16")	55mm (2-3/16")	16mm (5/8")	25mm (1")	228mm (9")	1/10
J903-300PSSMC	●● Polished - Light Wood / Pulido - Madera clara	300mm (11-13/16")	55mm (2-3/16")	16mm (5/8")	25mm (1")	228mm (9")	1/10
J903-300PSSN	●● Polished - Black / Pulido - Negro	300mm (11-13/16")	55mm (2-3/16")	16mm (5/8")	25mm (1")	228mm (9")	1/10
J903-300SSSMC	●● Satin - Light Wood / Satin - Madera Clara	300mm (11-13/16")	55mm (2-3/16")	16mm (5/8")	25mm (1")	228mm (9")	1/10



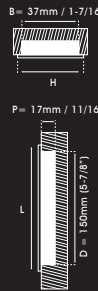
WFH116



Material: Stainless Steel 304-Black Plastic- Spring-loaded cover- Includes cut-out screws
 Material: Acero Inoxidable 304-Plastico Negro- Cubierta de resorte- Incluye tornillos recortables

CODE / CÓDIGO	FINISH / ACABADO	L	H	
WFH116	● Satin / Satín	154mm (6-1/16")	45mm (1-3/4")	10/100
WFH116PSS	● Polished / Pulido	154mm (6-1/16")	45mm (1-3/4")	10/100

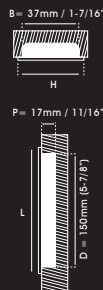
WFH117



Material: Stainless Steel 304-Black Plastic- Spring-loaded cover- Includes cut-out screws
 Material: Acero Inoxidable 304-Plastico Negro- Cubierta de resorte- Incluye tornillos recortables

CODE / CÓDIGO	FINISH / ACABADO	L	H	
WFH117	● Satin / Satín	154mm (6-1/16")	45mm (1-3/4")	10/100
WFH117PSS	● Polished / Pulido	154mm (6-1/16")	45mm (1-3/4")	10/100

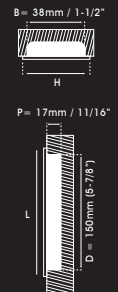
WFH114



Material: Stainless Steel 304-Black Plastic- Spring-loaded cover- Includes cut-out screws
 Material: Acero Inoxidable 304-Plastico Negro- Cubierta de resorte- Incluye tornillos recortables

CODE / CÓDIGO	FINISH / ACABADO	L	H	
WFH114	● Satin / Satín	154mm (6-1/16")	45mm (1-3/4")	10/100
WFH114PSS	● Polished / Pulido	154mm (6-1/16")	45mm (1-3/4")	10/100

WFH115



Material: Stainless Steel 304-Black Plastic- Includes cut-out screws
 Material: Acero Inoxidable 304-Plastico Negro- Incluye tornillos recortables

CODE / CÓDIGO	FINISH / ACABADO	L	H	
WFH115	● Satin / Satín	154mm (6-1/16")	45mm (1-3/4")	10/140
WFH115PSS	● Polished / Pulido	154mm (6-1/16")	45mm (1-3/4")	10/140





WFH110



P= 18mm / 11/16"



Material: Stainless Steel 304-Black Plastic- Spring-loaded cover- Includes cut-out screws
Material: Acero Inoxidable 304-Plastico Negro- Cubierta de resorte- Incluye tornillos recortables

CODE / CÓDIGO	FINISH / ACABADO	D	H	
WFH110X50	● Satin / Satin	46mm (1-13/16")	50mm (2")	25/250
WFH110X75	● Satin / Satin	72mm (2-13/16")	75mm (3")	25/100
WFH110X50PSS	● Polished / Pulido	46mm (1-13/16")	50mm (2")	25/250
WFH110X75PSS	● Polished / Pulido	72mm (2-13/16")	75mm (3")	25/100

WFH111



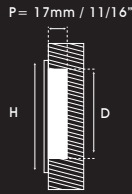
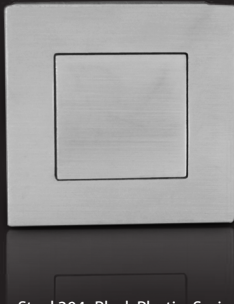
P= 18mm / 11/16"



Material: Stainless Steel 304-Black Plastic- Spring-loaded cover- Includes cut-out screws
Material: Acero Inoxidable 304-Plastico Negro- Cubierta de resorte- Incluye tornillos recortables

CODE / CÓDIGO	FINISH / ACABADO	D	H	
WFH111X50	● Satin / Satin	46mm (1-13/16")	50mm (2")	25/150
WFH111X75	● Satin / Satin	72mm (2-13/16")	75mm (3")	25/100
WFH111X50PSS	● Polished / Pulido	46mm (1-13/16")	50mm (2")	25/150
WFH111X75PSS	● Polished / Pulido	72mm (2-13/16")	75mm (3")	25/100

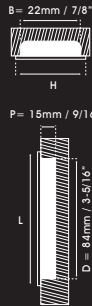
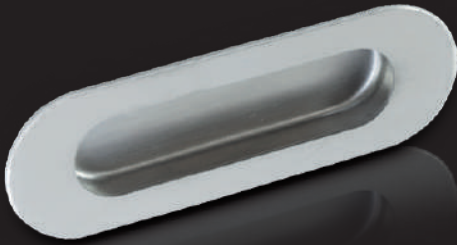
WFH112



Material: Stainless Steel 304 - Black Plastic - Spring-loaded cover - Includes cut-out screws
Material: Acero Inoxidable 304 - Plástico Negro - Cubierta de resorte - Incluye tornillos recortables

CODE / CÓDIGO	FINISH / ACABADO	D	H	
WFH112X50	● Satin / Satín	45mm (1-3/4")	50mm (2")	25/125
WFH112X75	● Satin / Satín	68mm (2-11/16")	75mm (3")	25/100
WFH112X50PSS	● Polished / Pulido	45mm (1-3/4")	50mm (2")	25/125
WFH112X75PSS	● Polished / Pulido	68mm (2-11/16")	75mm (3")	25/100

WFH203



Material: Stainless Steel 304 - Includes cut-out screws
Material: Acero Inoxidable 304 - Incluye tornillos recortables

CODE / CÓDIGO	FINISH / ACABADO	L	H	D	
WFH203	● Satin / Satín	120mm(4-3/4")	40mm(1-9/16")	84mm(3-5/16")	10/100

WFH204



Material: Stainless Steel 304 - Includes cut-out screws
Material: Acero Inoxidable 304 - Incluye tornillos recortables

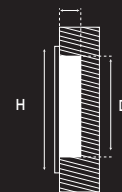
CODE / CÓDIGO	FINISH / ACABADO	L	H	
WFH204C	● Satin / Satín	102mm (4")	51mm (2")	40/240
WFH204G	● Satin / Satín	179mm (7-1/16")	60mm (2-3/8")	10/100
WFH204CPSS	● Polished / Pulido	102mm (4")	51mm (2")	40/240
WFH204GPSS	● Polished / Pulido	179mm (7-1/16")	60mm (2-3/8")	10/100
WFH204G-N	○ Black / Negro	179mm (7-1/16")	60mm (2-3/8")	10/100



WFH113



P = 18mm / 11/16"



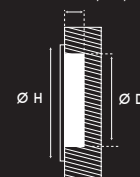
Material: Stainless Steel 304 - Black Plastic - Spring-loaded cover - Includes cut-out screws
 Material: Acero Inoxidable 304 - Plastico Negro - Cubierta de resorte - Incluye tornillos recortables

CODE / CÓDIGO	FINISH / ACABADO	D	H	
WFH113X50	● Satin / Satin	45mm (1-3/4")	50mm (2")	25/200
WFH113X75	● Satin / Satin	68mm (2-11/16")	75mm (3")	10/100
WFH113X50PSS	● Polished / Pulido	45mm (1-3/4")	50mm (2")	25/200
WFH113X75PSS	● Polished / Pulido	68mm (2-11/16")	75mm (3")	10/100

WFH201



P = 17mm / 11/16"



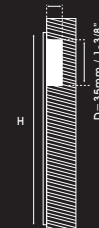
Material: Stainless Steel 304 - Includes cut-out screws
 Material: Acero Inoxidable 304 - Incluye tornillos recortables

CODE / CÓDIGO	FINISH / ACABADO	H	D	
WFH201	● Satin / Satin	65mm (2-9/16")	56mm (2-3/16")	50/100

TP13025



P = 18mm / 11/16"



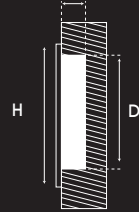
Material: Stainless Steel 304 - Includes cut-out screws
 Material: Acero Inoxidable 304 - Incluye tornillos recortables

CODE / CÓDIGO	FINISH / ACABADO	L	D	
TP13025MM	● Satin / Satin	170mm (6-11/16")	147mm (5-13/16")	10/100

WFH213



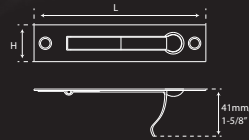
P = 14mm / 9/16"



Material: Stainless Steel 304 - Includes cut-out screws
Material: Acero Inoxidable 304 - Incluye tornillos recortables

CODE / CÓDIGO	FINISH / ACABADO	H	D	
WFH213C	● Satin / Satín	30mm (1-3/16")	22mm (7/8")	50/500
WFH213M	● Satin / Satín	50mm (2")	39mm (1-9/16")	30/300
WFH213G	● Satin / Satín	70mm (2-3/4")	53mm (2-1/16")	20/200

WEP001



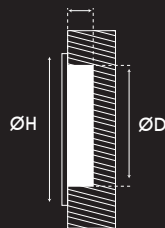
Material: Stainless Steel 304 - Includes cut-out screws
Material: Acero Inoxidable 304 - Incluye tornillos recortables

CODE / CÓDIGO	FINISH / ACABADO	L	H	
WEP001	● Satin / Satín	98mm (3-7/8")	20mm (13/16")	10/100

WFH202



P = 20mm / 13/16"



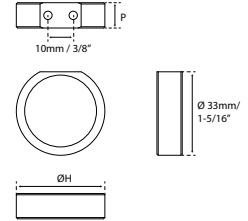
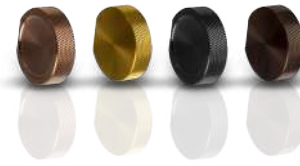
Material: Stainless Steel 304 - Includes cut-out screws
Material: Acero Inoxidable 304 - Incluye tornillos recortables

CODE / CÓDIGO	FINISH / ACABADO	H	D	
WFH202	● Satin / Satín	90mm (3-9/16")	70mm (2-3/4")	10/100





JK22162

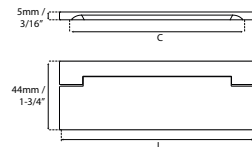


Material: Stainless Steel 304 - Includes cut-out screws
Material: Acero Inoxidable 304 - Incluye tornillos recortables

CODE / CÓDIGO	FINISH / ACABADO	ØH	P	
JK22162	● Satin / Satín	35mm (1-3/16")	10mm (3/8")	0/0
JK22162	● Titanium Copper / Titanio Cobre	35mm (1-3/16")	10mm (3/8")	
JK22162	● Titanium Gold / Titanio Oro	35mm (1-3/16")	10mm (3/8")	
JK22162	● Titanium Black / Titanio Negro	35mm (1-3/16")	10mm (3/8")	
JK22162	● Titanium Chocolate / Titanio Chocolate	35mm (1-3/16")	10mm (3/8")	



JK22105



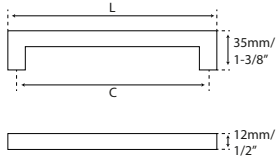
Material: Stainless Steel 304 - Includes cut-out screws
Material: Acero Inoxidable 304 - Incluye tornillos recortables

CODE / CÓDIGO	FINISH / ACABADO	L	C	
JK22105	● Satin / Satín	125mm (4-15/16")	112mm (4-7/16")	1/1
JK22105	● Titanium Copper / Titanio Cobre	125mm (4-15/16")	112mm (4-7/16")	1/1
JK22105	● Titanium Gold / Titanio Oro	125mm (4-15/16")	112mm (4-7/16")	1/1
JK22105	● Titanium Black / Titanio Negro	125mm (4-15/16")	112mm (4-7/16")	1/1
JK22105	● Titanium Chocolate / Titanio Chocolate	125mm (4-15/16")	112mm (4-7/16")	1/1





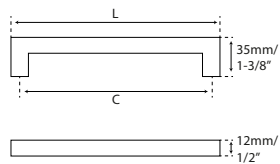
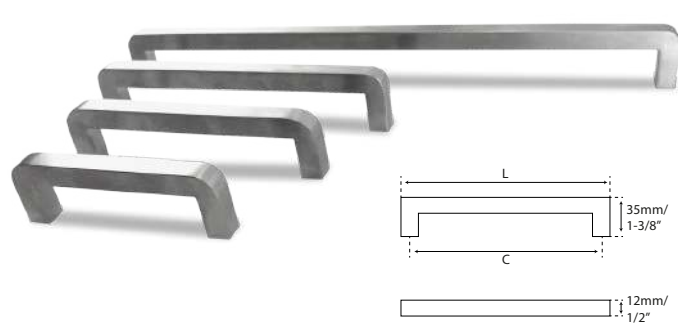
W44012



Material: Stainless Steel 304 - Includes cut-out screw
 Material: Acero Inoxidable 304 - Incluye tornillos recortables

CODE / CÓDIGO	FINISH / ACABADO	C	L	☒
W44012X96	● Satin / Satin	96mm (3-3/4")	108mm (4-1/4")	20/100
W44012X128	● Satin / Satin	128mm (5-1/16")	140mm (5-1/2")	20/100
W44012X160	● Satin / Satin	160mm (6-5/16")	172mm (6-3/4")	15/75
W44012X192	● Satin / Satin	192mm (7-9/16")	204mm (8-1/16")	10/50
W44012X224	● Satin / Satin	224mm (8-13/16")	236mm (9-5/16")	10/50
W44012X320	● Satin / Satin	320mm (12-5/8")	332mm (13-1/16")	10/40
W44012X512	● Satin / Satin	512mm (20-3/16")	524mm (20-5/8")	5/25
W44012X96PSS	● Polished / Pulido	96mm (3-3/4")	108mm (4-1/4")	20/100
W44012X128PSS	● Polished / Pulido	128mm (5-1/16")	140mm (5-1/2")	20/100
W44012X160PSS	● Polished / Pulido	160mm (6-5/16")	172mm (6-3/4")	15/75
W44012X192PSS	● Polished / Pulido	192mm (7-9/16")	204mm (8-1/16")	10/50
W44012X224PSS	● Polished / Pulido	224mm (8-13/16")	236mm (9-5/16")	10/50
W44012X320PSS	● Polished / Pulido	320mm (12-5/8")	332mm (13-1/16")	10/40
W44012X512PSS	● Polished / Pulido	512mm (20-3/16")	524mm (20-5/8")	5/25

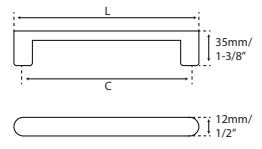
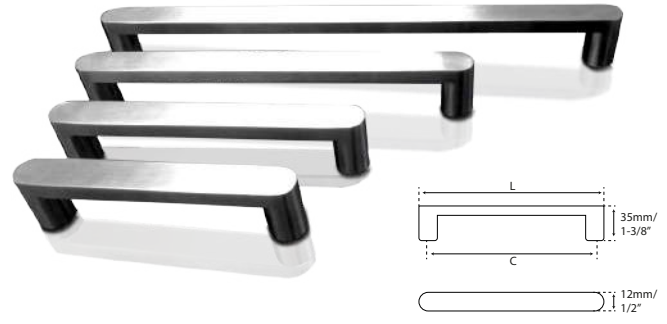
W23112



Material: Stainless Steel 304 - Includes cut-out screws
 Material: Acero Inoxidable 304 - Incluye tornillos recortables

CODE / CÓDIGO	FINISH / ACABADO	C	L	☒
W23112X96	● Satin / Satin	96mm (3-3/4")	107mm (4-7/32")	10/100
W23112X128	● Satin / Satin	128mm (5-1/16")	140mm (5-1/2")	10/100
W23112X160	● Satin / Satin	160mm (6-5/16")	170mm (6-11/16")	10/100
W23112X320	● Satin / Satin	320mm (12-5/8")	330mm (13")	10/50

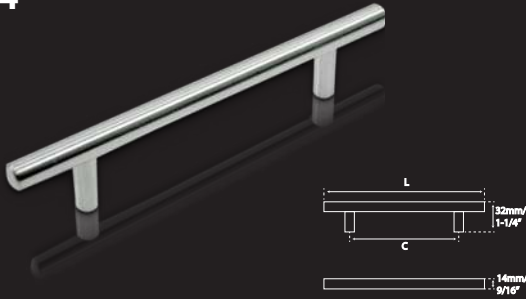
W23610



Material: Stainless Steel 304 - Includes cut-out screws
 Material: Acero Inoxidable 304 - Incluye tornillos recortables

CODE / CÓDIGO	FINISH / ACABADO	C	L	☒
W23610X96	● Satin / Satin	96mm (3-3/4")	115mm (4-1/2")	10/100
W23610X128	● Satin / Satin	128mm (5-1/16")	147mm (5-13/16")	10/100
W23610X160	● Satin / Satin	160mm (6-5/16")	180mm (7-1/16")	10/50
W23610X224	● Satin / Satin	224mm (8-13/16")	244mm (9-5/8")	10/50
W23610X320	● Satin / Satin	320mm (12-5/8")	337mm (13-1/4")	10/50

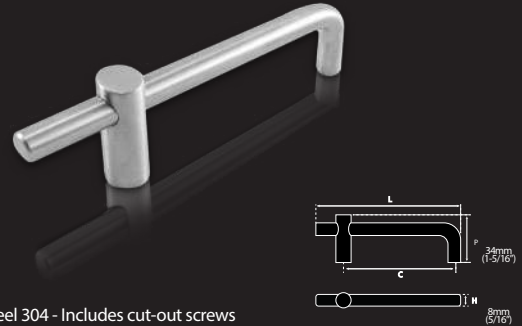
W020014
W020014



Material: Stainless Steel 316 - Includes cut-out screws
Material: Acero Inoxidable 316 - Incluye tornillos recortables

CODE / CÓDIGO	FINISH / ACABADO	C	L	
W20014X128	● Satin / Satin	128mm (5-1/16")	138mm (5-7/16")	10/50

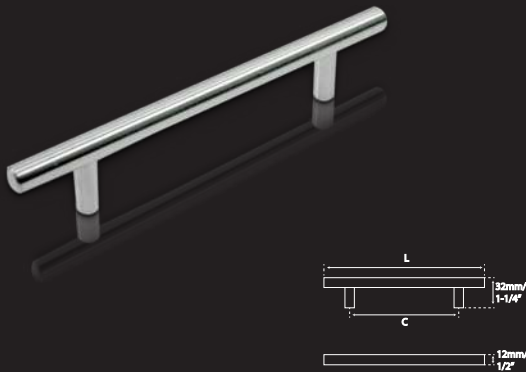
W2058



Material: Stainless Steel 304 - Includes cut-out screws
Material: Acero Inoxidable 304 - Incluye tornillos recortables

CODE / CÓDIGO	FINISH / ACABADO	C	L	
W2058X64	● Satin / Satin	64mm (2-1/2")	85mm (3-3/82)	10/100
W2058X96	● Satin / Satin	96mm (3-3/4")	115mm (4-1/2")	10/100
W2058X128	● Satin / Satin	128mm (5-1/16")	154mm (6-1/16")	10/100

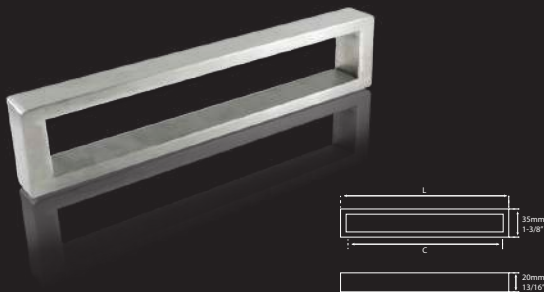
W20012



Material: Stainless Steel 304 - Ø 1/2" - Includes cut-out screws
Material: Acero Inoxidable 304 - Ø 12mm - Incluye tornillos recortables

CODE / CÓDIGO	FINISH / ACABADO	C	L	
W20012X64	● Satin / Satin	64mm (2-1/2")	128mm (5-1/16")	25/125
W20012X96	● Satin / Satin	96mm (3-3/4")	160mm (6-5/16")	20/100
W20012X128	● Satin / Satin	128mm (5-1/16")	192mm (7-9/16")	15/75
W20012X160	● Satin / Satin	160mm (6-5/16")	224mm (8-13/16")	20/100
W20012X192	● Satin / Satin	192mm (7-9/16")	256mm (10-1/16")	20/100
W20012X224	● Satin / Satin	224mm (8-13/16")	286mm (11-1/4")	20/80
W20012X256	● Satin / Satin	256mm (10-1/16")	320mm (12-5/8")	20/80
W20012x320	● Satin / Satin	320mm (12-5/8")	380mm (14-15/16")	20/80
W20012X464	● Satin / Satin	464mm (18-1/4")	404mm (15-7/8")	5/30
W20012x512	● Satin / Satin	512mm (20-3/16")	578mm (22-3/4")	5/30
W20012X664	● Satin / Satin	664mm (26-1/8")	713mm (28-1/16")	5/30
W20012X764	● Satin / Satin	764mm (30-1/16")	814mm (32-1/16")	5/30
W20012X864	● Satin / Satin	864mm (34")	915mm (36")	5/30
W20012X906	● Satin / Satin	906mm (35-11/16")	957mm (37-11/16")	5/30
W20012X1064	● Satin / Satin	1064mm (41-7/8")	1114mm (43-7/8")	5/25
W20012X1166	● Satin / Satin	1166mm (45-7/8")	1216mm (47-7/8")	5/25
W20012X1296	● Satin / Satin	1296mm (51-1/16")	1346mm (53")	5/25

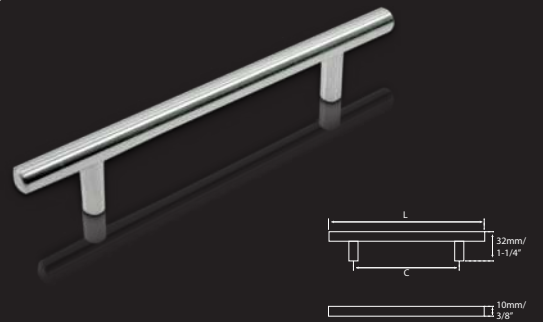
W490



Material: Stainless Steel 304 - Includes cut-out screws
Material: Acero Inoxidable 304 - Incluye tornillos recortables

CODE / CÓDIGO	FINISH / ACABADO	C	L	
W490X96	● Satin / Satin	96mm (3-3/4")	105mm (4-1/8")	5/25
W490X160	● Satin / Satin	160mm (6-5/16")	169mm (6-5/8")	5/25
W490X192	● Satin / Satin	192mm (7-9/16")	202mm (7-15/16")	5/25

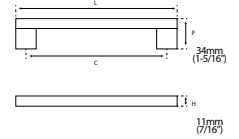
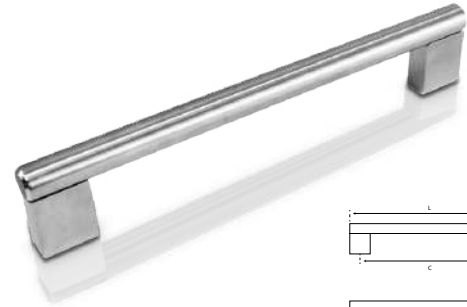
W20010



Material: Stainless Steel 304 - Ø 3/8" - Includes cut-out screws
Material: Acero Inoxidable 304 - Ø 10mm - Incluye tornillos recortables

CODE / CÓDIGO	FINISH / ACABADO	C	L	
W20010X64	● Satin / Satin	64mm (2-1/2")	128mm (5-1/16")	20/100
W20010X96	● Satin / Satin	96mm (3-3/4")	160mm (6-5/16")	20/100
W20010X128	● Satin / Satin	128mm (5-1/16")	192mm (7-9/16")	20/100
W20010X160	● Satin / Satin	160mm (6-5/16")	224mm (8-13/16")	20/100
W20010X192	● Satin / Satin	192mm (7-9/16")	256mm (10-1/16")	20/100
W20010X224	● Satin / Satin	224mm (8-13/16")	288mm (11-5/16")	20/80
W20010X256	● Satin / Satin	256mm (10-1/16")	318mm (12-1/2")	20/80
W20010x320	● Satin / Satin	320mm (12-5/8")	383mm (15-1/16")	10/50
W20010x512	● Satin / Satin	512mm (20-3/16")	574mm (22-5/8")	10/50

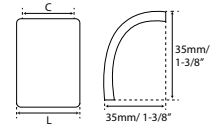
W33312



Material: Stainless Steel 304 - Includes cut-out screws
Material: Acero Inoxidable 304 - Incluye tornillos recortables

CODE / CÓDIGO	FINISH / ACABADO	C	L	
W33312X128	● Satin / Satin	128mm (5-1/16")	118mm (4-5/8")	20/100
W33312X160	● Satin / Satin	160mm (6-5/16")	150mm (5-7/8")	20/100
W33312X192	● Satin / Satin	192mm (7-9/16")	182mm (7-3/16")	20/100
W33312X320	● Satin / Satin	320mm (12-5/8")	310mm (12-3/16")	20/100

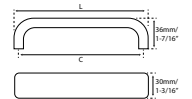
WFH335



Material: Stainless Steel 304 - Includes cut-out screws
Material: Acero Inoxidable 304 - Incluye tornillos recortables

CODE / CÓDIGO	FINISH / ACABADO	C	L	
WFH335	● Satin / Satin	16.5mm (11/16")	30mm (1-3/16")	15/150
WFH335PSS	● Polished / Pulido	16.5mm (11/16")	30mm (1-3/16")	15/150

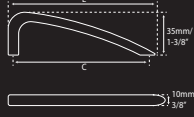
W120



Material: Stainless Steel 304 - Includes cut-out screws
Material: Acero Inoxidable 304 - Incluye tornillos recortables

CODE / CÓDIGO	FINISH / ACABADO	C	L	
W120X96	● Satin / Satin	96mm (3-3/4")	102mm (4")	15/75
W120X128	● Satin / Satin	128mm (5-1/16")	134mm (5-1/4")	15/75
W120X160	● Satin / Satin	160mm (6-5/16")	166mm (6-9/16")	10/50
W120X192	● Satin / Satin	192mm (7-9/16")	198mm (7-13/16")	10/50
W120X320	● Satin / Satin	320mm (12-5/8")	326mm (12-13/16")	10/40
W120X512	● Satin / Satin	512mm (20-3/16")	518mm (20-3/8")	5/25
W120X96PSS	● Polished / Pulido	96mm (3-3/4")	102mm (4")	15/75
W120X128PSS	● Polished / Pulido	128mm (5-1/16")	134mm (5-1/4")	10/50
W120X160PSS	● Polished / Pulido	160mm (6-5/16")	166mm (6-9/16")	10/50
W120X192PSS	● Polished / Pulido	192mm (7-9/16")	198mm (7-13/16")	10/50
W120X320PSS	● Polished / Pulido	320mm (12-5/8")	326mm (12-13/16")	10/40
W120X512PSS	● Polished / Pulido	512mm (20-3/16")	518mm (20-3/8")	5/25
W120X160CSS	● Copper / Cobre	160mm (6-5/16")	166mm (6-9/16")	10/50
W120X320CSS	● Copper / Cobre	320mm (12-5/8")	326mm (12-13/16")	10/40
W120X160N	● Black / Negro	160mm (6-5/16")	166mm (6-9/16")	10/50
W120X320N	● Black / Negro	320mm (12-5/8")	326mm (12-13/16")	10/40

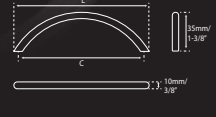
W12810



Material: Stainless Steel 304 - Includes cut-out screws
Material: Acero Inoxidable 304 - Incluye tornillos recortables

CODE / CÓDIGO	FINISH / ACABADO	C	L	
W12810X96	● Satin / Satín	96mm (3-3/4")	118mm (4-5/8")	20/100
W12810X128	● Satin / Satín	128mm (5-1/16")	153mm (6")	20/100
W12810x160	● Satin / Satín	160mm (6-5/16")	196mm (7-11/16")	20/100
w12810x192	● Satin / Satín	192mm (7-9/16")	242mm (9-1/2")	20/100

W163



Material: Stainless Steel 304 - Includes cut-out screws
Material: Acero Inoxidable 304 - Incluye tornillos recortables

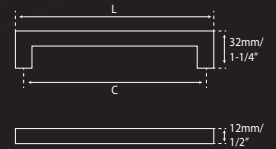
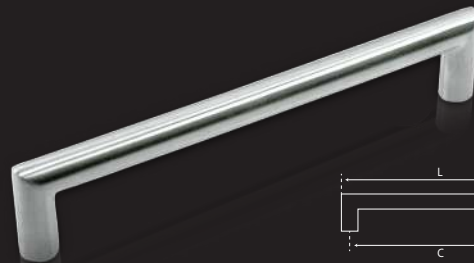
CODE / CÓDIGO	FINISH / ACABADO	C	L	
W163X96	● Satin / Satín	96mm (3-3/4")	113mm (4-7/16")	25/125
W163X128	● Satin / Satín	128mm (5-1/16")	145mm (5-11/16")	25/125



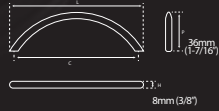
W33112

Material: Stainless Steel 304 - Includes cut-out screws
Material: Acero Inoxidable 304 - Incluye tornillos recortables

CODE / CÓDIGO	FINISH / ACABADO	C	L	
W33112X96	● Satin / Satín	96mm (3-3/4")	108mm (4-1/4")	20/100
W33112X128	● Satin / Satín	128mm (5-1/16")	140mm (5-1/2")	20/100
W33112X160	● Satin / Satín	160mm (6-5/16")	172mm (6-3/4")	15/75
W33112X192	● Satin / Satín	192mm (7-9/16")	204mm (8-1/16")	10/100
W33112X320	● Satin / Satín	320mm (12-5/8")	332mm (13-1/16")	10/100
W33112X480	● Satin / Satín	480mm (18-7/8")	492mm (19-3/8")	10/50
W33112X96PSS	● Polished / Pulido	96mm (3-3/4")	108mm (4-1/4")	20/100
W33112X128PSS	● Polished / Pulido	128mm (5-1/16")	140mm (5-1/2")	20/100
W33112X160PSS	● Polished / Pulido	160mm (6-5/16")	172mm (6-3/4")	15/75
W33112X192PSS	● Polished / Pulido	192mm (7-9/16")	204mm (8-1/16")	10/100
W33112X320PSS	● Polished / Pulido	320mm (12-5/8")	332mm (13-1/16")	10/100



W164



Material: Stainless Steel 304 - Includes cut-out screws
Material: Acero Inoxidable 304 - Incluye tornillos recortables

CODE / CÓDIGO	FINISH / ACABADO	C	L	
W164X96	● Satin / Satin	96mm (3-3/4")	116mm (4-9/16")	30/150
W164X128	● Satin / Satin	128mm (5-1/16")	148mm (5-13/16")	10/100
W164X192	● Satin / Satin	192mm (7-9/16")	210mm (8-1/4")	10/100

W40012

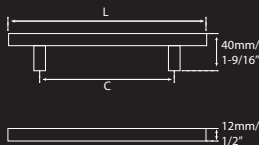
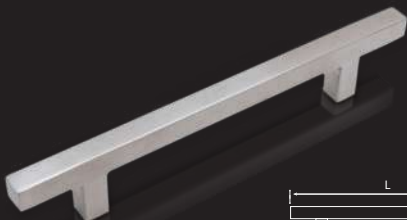


Material: Stainless Steel 304 - Includes cut-out screws
Material: Acero Inoxidable 304 - Incluye tornillos recortables

CODE / CÓDIGO	FINISH / ACABADO	C	L	
W40012X96	● Satin / Satin	96mm (3-3/4")	160mm (6-5/16")	20/100
W40012X128	● Satin / Satin	128mm (5-1/16")	192mm (7-9/16")	15/75
W40012X160	● Satin / Satin	160mm (6-5/16")	224mm (8-13/16")	15/75
W40012X224	● Satin / Satin	224mm (8-13/16")	288mm (11-5/16")	15/60
W40012X320	● Satin / Satin	320mm (12-5/8")	384mm (15-1/8")	5/50



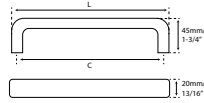
W22712



Material: Stainless Steel 304 - Includes cut-out screws
Material: Acero Inoxidable 304 - Incluye tornillos recortables

CODE / CÓDIGO	FINISH / ACABADO	C	L	
W22712X96	● Satin / Satin	96mm (3-3/4")	160mm (6-5/16")	10/100
W22712X128	● Satin / Satin	128mm (5-1/16")	192mm (7-9/16")	10/100
W22712X192	● Satin / Satin	192mm (7-9/16")	256mm (10-1/16")	10/100
W22712X256	● Satin / Satin	256mm (10-1/16")	316mm (12-7/16")	10/100
W22712X320	● Satin / Satin	320mm (12-5/8")	379mm (14/16/16")	10/100
W22712X480	● Satin / Satin	480mm (18-7/8")	544mm (21-7/16")	10/60

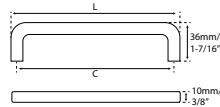
W025



Material: Stainless Steel 304 - Includes cut-out screws
Material: Acero Inoxidable 304 - Incluye tornillos recortables

CODE / CÓDIGO	FINISH / ACABADO	C	L	
W025X96	● Satin / Satin	96mm (3-3/4")	106mm (4-3/16")	20/100
W025X128	● Satin / Satin	128mm (5-1/16")	138mm (5-7/16")	10/50
W025X160	● Satin / Satin	160mm (6-5/16")	170mm (6-11/16")	10/50
W025X192	● Satin / Satin	192mm (7-9/16")	202mm (7-15/16")	15/75

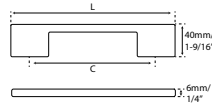
W13110



Material: Stainless Steel 304 - Includes cut-out screw
Material: Acero Inoxidable 304 - Incluye tornillos recortables

CODE / CÓDIGO	FINISH / ACABADO	C	L	
W13110X96	● Satin / Satin	96mm (3-3/4")	104mm (4-1/8")	25/125
W13110X128	● Satin / Satin	128mm (5-1/16")	136mm (5-3/8")	25/125
W13110X160	● Satin / Satin	160mm (6-5/16")	170mm (6-11/16")	25/125
W13110X192	● Satin / Satin	192mm (7-9/16")	202mm (7-15/16")	20/100

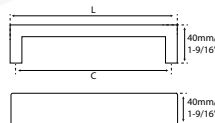
W110



Material: Stainless Steel 304 - Includes cut-out screw
Material: Acero Inoxidable 304 - Incluye tornillos recortables

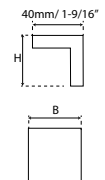
CODE / CÓDIGO	FINISH / ACABADO	C	L	
W110X96	● Satin / Satin	96mm (3-3/4")	126mm (4-15/16")	20/100
W110X128	● Satin / Satin	128mm (5-1/16")	158mm (6-1/4")	20/100
W110X160	● Satin / Satin	160mm (6-5/16")	190mm (7-1/2")	20/100
W110X192	● Satin / Satin	192mm (7-9/16")	222mm (8-3/4")	15/75
W110X320	● Satin / Satin	320mm (12-5/8")	350mm (13-3/4")	15/60
W110X512	● Satin / Satin	512mm (20-3/16")	544mm (21-7/16")	10/50
W110X96PSS	● Polished / Pulido	96mm (3-3/4")	126mm (4-15/16")	20/100
W110X128PSS	● Polished / Pulido	128mm (5-1/16")	158mm (6-1/4")	20/100
W110X160PSS	● Polished / Pulido	160mm (6-5/16")	190mm (7-1/2")	20/100
W110X192PSS	● Polished / Pulido	192mm (7-9/16")	222mm (8-3/4")	15/75
W110X320PSS	● Polished / Pulido	320mm (12-5/8")	350mm (13-3/4")	15/60
W110X512PSS	● Polished / Pulido	512mm (20-3/16")	544mm (21-7/16")	10/50
W110X160CSS	● Copper / Cobre	160mm (6-5/16")	190mm (7-1/2")	20/100
W110X320CSS	● Copper / Cobre	320mm (12-5/8")	350mm (13-3/4")	15/60
W110X160N	● Black / Negro	160mm (6-5/16")	190mm (7-1/2")	20/100
W110X320N	● Black / Negro	320mm (12-5/8")	350mm (13-3/4")	15/60

WFH337/W10010

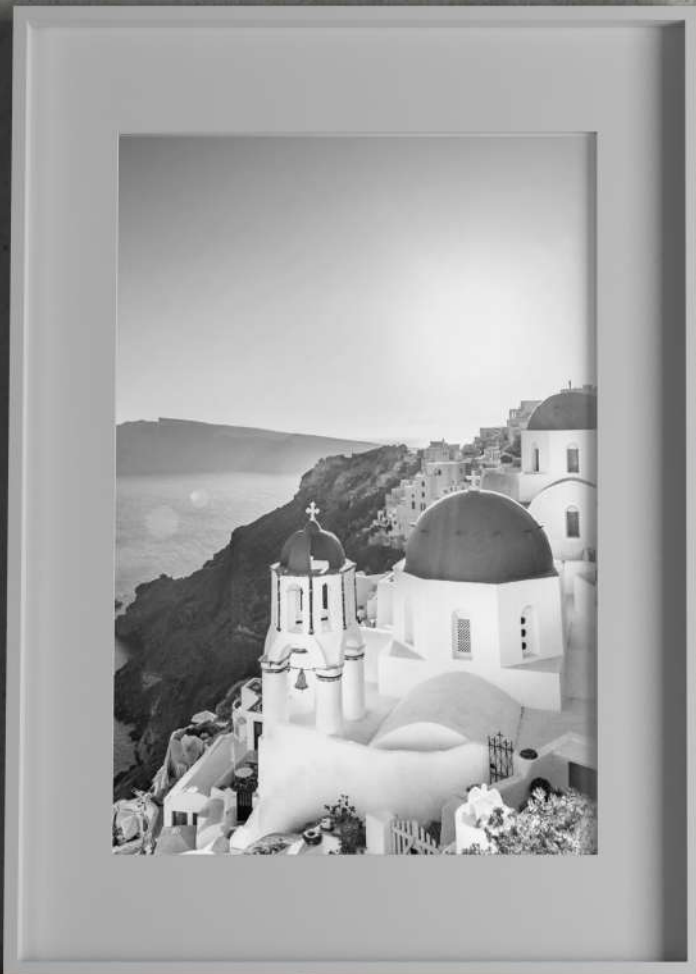


Material: Stainless Steel 304 - Includes cut-out screw
Material: Acero Inoxidable 304 - Incluye tornillos recortables

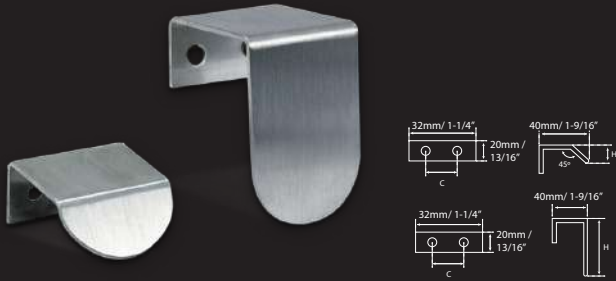
CODE / CÓDIGO	FINISH / ACABADO	C	L	
W10010X96	● Satin / Satin	96mm (3-3/4")	106mm (4-3/16")	10/100
W10010X128	● Satin / Satin	128mm (5-1/16")	138mm (5-7/16")	10/100
W10010X160	● Satin / Satin	160mm (6-5/16")	170mm (6-11/16")	10/100
W10010X192	● Satin / Satin	192mm (7-9/16")	202mm (7-15/16")	10/100



CODE / CÓDIGO	FINISH / ACABADO	B	H	
WFH337	● Satin / Satin	40mm (1-9/16")	40mm (1-9/16")	20/100



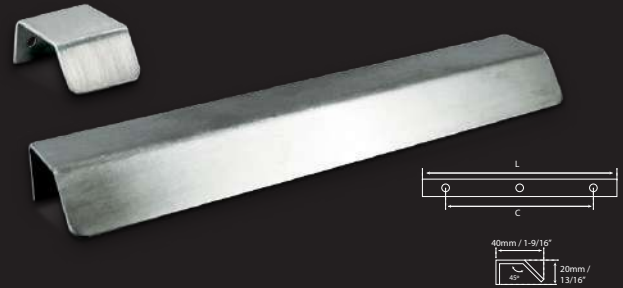
WIN380



Material: Stainless Steel 304 - Includes cut-out screws
Material: Acero Inoxidable 304 - Incluye tornillos recortables

CODE / CÓDIGO	FINISH / ACABADO	C	H	⊗
WIN380X32	● Satin / Satin	16mm (5/8")	50mm (1-15/16")	10/100
WIN380X50	● Satin / Satin	16mm (5/8")	15mm (9/16")	10/100

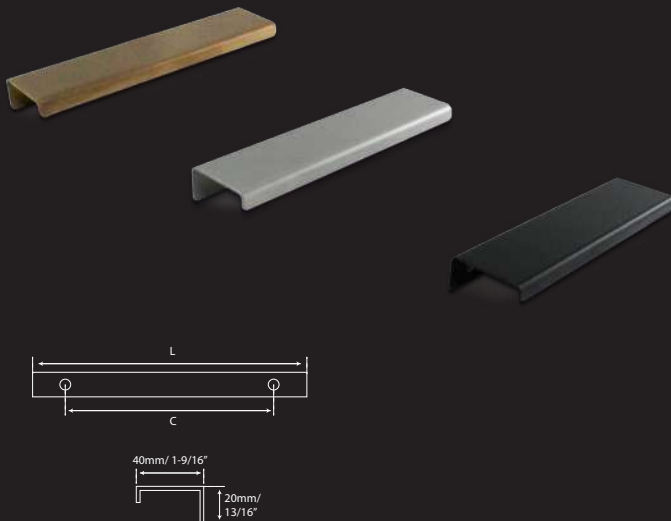
WIN390



Material: Stainless Steel 304 - Includes cut-out screws
Material: Acero Inoxidable 304 - Incluye tornillos recortables

CODE / CÓDIGO	FINISH / ACABADO	C	L	⊗
WIN390X32	● Satin / Satin	16mm (5/8")	32mm (1-1/4")	10/100
WIN390X192	● Satin / Satin	175mm (6-7/8")	192mm (7-9/16")	10/100

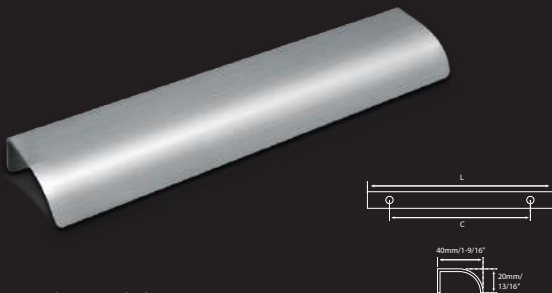
WIN350



Material: Stainless Steel 304 - Includes cut-out screws
Material: Acero Inoxidable 304 - Incluye tornillos recortables

CODE / CÓDIGO	FINISH / ACABADO	C	L	⊗
WIN35032	● Satin / Satin	16mm (5/8")	32mm (1-1/4")	40/400
WIN35025	● Satin / Satin	25mm (1")	45mm (1-3/4")	50/500
WIN35050	● Satin / Satin	48mm (1-15/16")	70mm (2-3/4")	25/250
WIN35096	● Satin / Satin	63mm (2-1/2")	96mm (3-3/4")	25/200
WIN350128	● Satin / Satin	94mm (3-11/16")	128mm (5-1/16")	20/200
WIN350160	● Satin / Satin	129mm (5-1/16")	160mm (6-5/16")	20/200
WIN350192	● Satin / Satin	162mm (6-3/8")	192mm (7-9/16")	15/150
WIN3501000	● Satin / Satin	970mm (38-3/16")	1000mm (39-3/8")	20/200
WIN35032PSS	● Polished / Pulido	16mm (5/8")	32mm (1-1/4")	40/200
WIN35025PSS	● Polished / Pulido	25mm (1")	45mm (1-3/4")	25/200
WIN35050PSS	● Polished / Pulido	48mm (1-15/16")	70mm (2-3/4")	25/200
WIN35096PSS	● Polished / Pulido	63mm (2-1/2")	96mm (3-3/4")	25/200
WIN350128PSS	● Polished / Pulido	94mm (3-11/16")	128mm (5-1/16")	20/200
WIN350160PSS	● Polished / Pulido	129mm (5-1/16")	160mm (6-5/16")	20/200
WIN350192PSS	● Polished / Pulido	162mm (6-3/8")	192mm (7-9/16")	15/150
WIN35025CSS	● Copper / Cobre	25mm (1")	45mm (1-3/4")	50/500
WIN35096CSS	● Copper / Cobre	63mm (2-1/2")	96mm (3-3/4")	25/250
WIN350160CSS	● Copper / Cobre	129mm (5-1/16")	160mm (6-5/16")	20/200
WIN350192CSS	○ Copper / Cobre	162mm (6-3/8")	192mm (7-9/16")	15/150
WIN35025NE	○ Black / Negro	25mm (1")	45mm (1-3/4")	50/500
WIN35096NE	○ Black / Negro	63mm (2-1/2")	96mm (3-3/4")	25/250
WIN350160NE	○ Black / Negro	129mm (5-1/16")	160mm (6-5/16")	20/200
WIN350192NE	○ Black / Negro	162mm (6-3/8")	192mm (7-9/16")	15/150

WIN360



Material: Stainless Steel 304 - Includes cut-out screws
Material: Acero Inoxidable 304 - Incluye tornillos recortables

CODE / CÓDIGO	FINISH / ACABADO	C	L	⊗
WIN360X32	● Satin / Satin	14mm (9/16")	32mm (1-1/4")	40/200
WIN360X96	● Satin / Satin	64mm (2-1/2")	96mm (3-3/4")	25/250
WIN360X128	● Satin / Satin	95mm (3-3/4")	128mm (5-1/16")	25/200
WIN360X192	● Satin / Satin	158mm (7-9/16")	192mm (7-9/16")	10/100

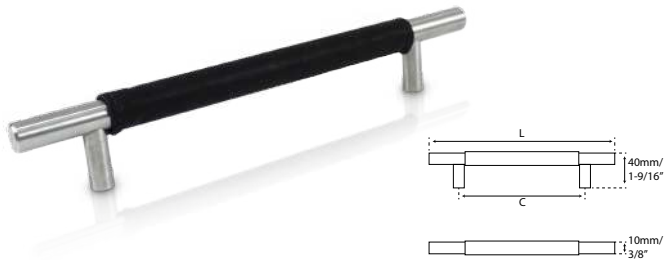
WIN370



Material: Stainless Steel 304 - Includes cut-out screws
Material: Acero Inoxidable 304 - Incluye tornillos recortables

CODE / CÓDIGO	FINISH / ACABADO	C	L	⊗
WIN370X128	● Satin / Satin	98mm (3-7/8")	128mm (5-1/16")	25/250
WIN370X160	● Satin / Satin	127mm (5")	160mm (6-5/16")	20/200
WIN370X192	● Satin / Satin	161mm (6-5/16")	192mm (7-9/16")	10/100
WIN370X224	● Satin / Satin	193mm (7-5/8")	224mm (8-13/16")	10/100

WP20012



Material: Stainless Steel 304 - Cow Leather- Incluye tornillos recortables
Material: Acero Inoxidable 304- Piel de Vaca- Incluye tornillos recortables

CODE / CÓDIGO	FINISH / ACABADO	C	L	
WP20012X128C	● Brown Leather / Piel Café	128mm (5-1/16")	192mm (7-9/16")	15/75
WP20012X128N	● Black Leather / Piel Negra	128mm (5-1/16")	192mm (7-9/16")	15/75
WP20012X160C	● Brown Leather / Piel Café	160mm (6-5/16")	224mm (8-13/16")	20/100
WP20012X160N	● Black Leather / Piel Negra	160mm (6-5/16")	224mm (8-13/16")	20/100

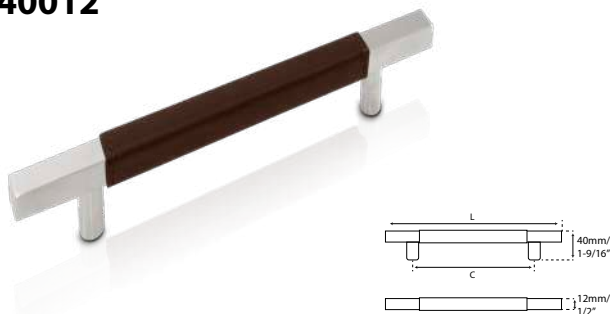
WP120



Material: Stainless Steel 304/Polished Stainless Steel- Cow Leather- Incluye tornillos recortables
Material: Acero Inoxidable 304 / Acero Inoxiable Pulido - Piel de Vaca- Incluye tornillos recortables

CODE / CÓDIGO	FINISH / ACABADO	C	L	
WP120X128C	● Brown Leather / Piel Café	128mm (5-1/16")	134mm (5-1/4")	15/75
WP120X128N	● Black Leather / Piel Negra	128mm (5-1/16")	134mm (5-1/4")	15/75
WP120X160C	● Brown Leather / Piel Café	160mm (6-5/16")	166mm (6-9/16")	10/50
WP120X160N	● Black Leather / Piel Negra	160mm (6-5/16")	166mm (6-9/16")	10/50
WP120X128PSSC	● Brown Leather / Piel Café	128mm (5-1/16")	134mm (5-1/4")	15/75
WP120X128PSSN	● Black Leather / Piel Negra	128mm (5-1/16")	134mm (5-1/4")	15/75
WP120X160PSSC	● Brown Leather / Piel Café	160mm (6-5/16")	166mm (6-9/16")	10/50
WP120X160PSSN	● Black Leather / Piel Negra	160mm (6-5/16")	166mm (6-9/16")	10/50

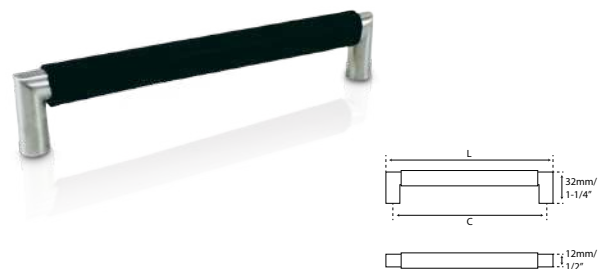
WP40012



Material: Stainless Steel 304- Cow Leather -Incluye tornillos recortables
Material: Acero Inoxidable 304 - Piel de Vaca - Incluye tornillos recortables

CODE / CÓDIGO	FINISH / ACABADO	C	L	
WP40012X96C	● Brown Leather / Piel Café	96mm (3-3/4")	160mm (6-5/16")	20/100
WP40012X96N	● Black Leather / Piel Negra	96mm (3-3/4")	160mm (6-5/16")	20/100
WP40012X128C	● Brown Leather / Piel Café	128mm (5-1/16")	192mm (7-9/16")	15/75
WP40012X128N	● Black Leather / Piel Negra	128mm (5-1/16")	192mm (7-9/16")	15/75

WP33112



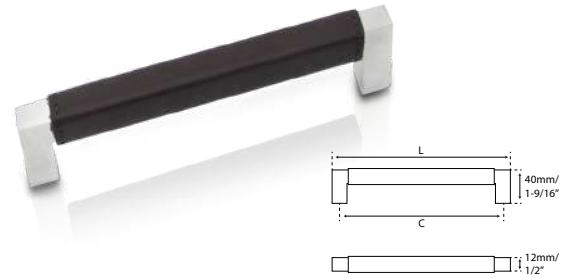
Material: Stainless Steel 304 / Polished Stainless Steel- Cow Leather- Incluye tornillos recortables
Material: Acero Inoxidable 304 / Acero Inoxiable Pulido - Piel de Vaca- Incluye tornillos recortables

CODE / CÓDIGO	FINISH / ACABADO	C	L	
WP33112X128C	● Brown Leather / Piel Café	128mm (5-1/16")	140mm (5-1/2")	20/100
WP33112X128N	● Black Leather / Piel Negra	128mm (5-1/16")	140mm (5-1/2")	20/100
WP33112X160C	● Brown Leather / Piel Café	160mm (6-5/16")	172mm (6-3/4")	15/75
WP33112X160N	● Black Leather / Piel Negra	160mm (6-5/16")	172mm (6-3/4")	15/75
WP33112X128PSSC	● Brown Leather / Piel Café	128mm (5-1/16")	140mm (5-1/2")	20/100
WP33112X128PSSN	● Black Leather / Piel Negra	128mm (5-1/16")	140mm (5-1/2")	20/100
WP33112X160PSSC	● Brown Leather / Piel Café	160mm (6-5/16")	172mm (6-3/4")	15/75
WP33112X160PSSN	● Black Leather / Piel Negra	160mm (6-5/16")	172mm (6-3/4")	15/75





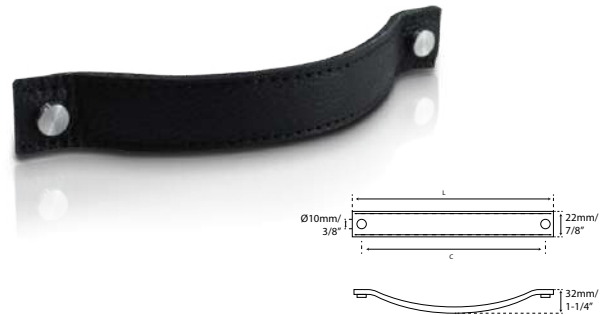
WP44012



Material: Stainless Steel 304 - Cow Leather- Includes cut-out screws
Material: Acero Inoxidable 304 - Piel de Vaca - Incluye tornillos recortables

CODE / CÓDIGO	FINISH / ACABADO	C	L	
WP44012X96C	● Brown Leather / Piel Café	96mm (3-3/4")	106mm (4-3/16")	20/100
WP44012X96N	● Black Leather / Piel Negra	96mm (3-3/4")	106mm (4-3/16")	20/100
WP44012X128C	● Brown Leather / Piel Café	128mm (5-1/16")	138mm (5-7/16")	20/100
WP44012X128N	● Black Leather / Piel Negra	128mm (5-1/16")	138mm (5-7/16")	20/100

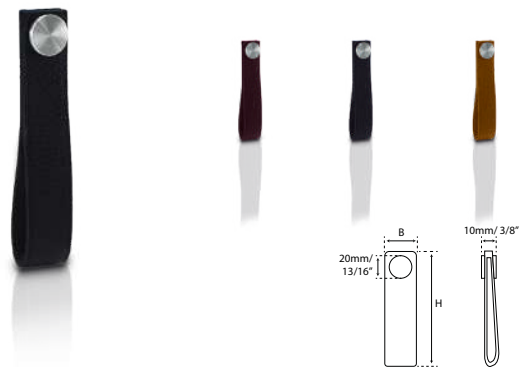
J554



Material: Stainless Steel 304 - Cow Leather - Includes cut-out screws
Material: Acero Inoxidable 304 - Piel de Vaca - Incluye tornillos recortables

CODE / CÓDIGO	FINISH / ACABADO	C	L	
J554-128SLBN	● Black Leather / Piel Negra	128mm (5-1/16")	145mm (5-11/16")	1/30

J557

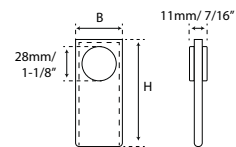


Material: Stainless Steel 304 - Cow Leather- Includes cut-out screws
Material: Acero Inoxidable 304 - Piel de Vaca - Incluye tornillos recortables

CODE / CÓDIGO	FINISH / ACABADO	B	H	
J557-128C	● Clear Leather / Piel Clara	20mm (1-9/16")	145mm (7-11/16")	10
J557-128B	● Brown Leather / Piel Café	20mm (1-9/16")	145mm (7-11/16")	10
J557-128N	● Black Leather / Piel Negra	20mm (1-9/16")	145mm (7-11/16")	10

All measurements are approximate / Las medidas son aproximadas

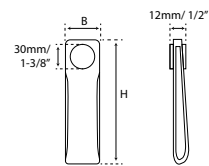
JK22004



Material: Stainless Steel 304 - Cow Leather- Includes cut-out screws
Material: Acero Inoxidable 304 - Piel de Vaca- Incluye tornillos recortables

CODE / CÓDIGO	FINISH / ACABADO	B	H	
JK22004C	● Clear Leather / Piel Clara	30mm (1-3/16")	60mm (2-3/8")	10
JK22004B	● Brown Leather / Piel Café	30mm (1-3/16")	60mm (2-3/8")	10
JK22004N	● Black Leather / Piel Negra	30mm (1-3/16")	60mm (2-3/8")	10

JK00001

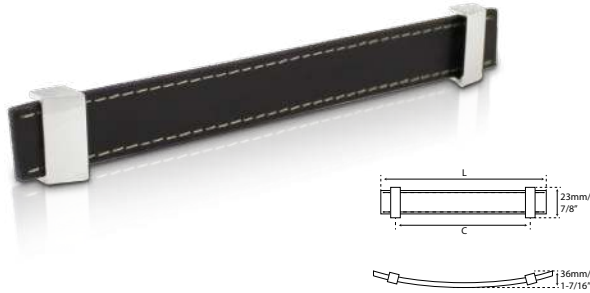


Material: Stainless Steel 304 - Cow Leather- Includes cut-out screws
Material: Acero Inoxidable 304 - Piel de Vaca- Incluye tornillos recortables

CODE / CÓDIGO	FINISH / ACABADO	B	H	
JK00001C	● Clear Leather / Piel Clara	40mm (1-9/16")	195mm (7-11/16")	10
JK00001B	● Brown Leather / Piel Café	40mm (1-9/16")	195mm (7-11/16")	10
JK00001N	● Black Leather / Piel Negra	40mm (1-9/16")	195mm (7-11/16")	10



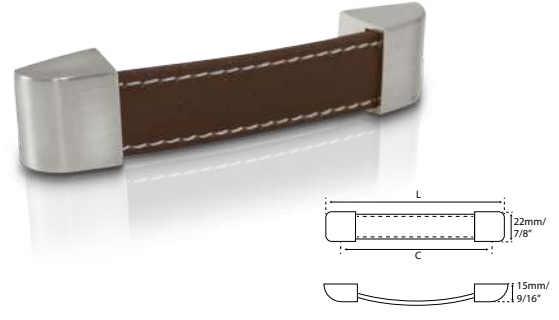
J552



Material: Níquel Satín- Pleather- Includes cut-out screws
Material: Satin Nickel -Tacto piel - Incluye tornillos recortables

CODE / CÓDIGO	FINISH / ACABADO	C	L	
J552-128SLBN	● Brown Leather / Piel Café	128mm (5-1/16")	140mm (5-1/2")	1/30

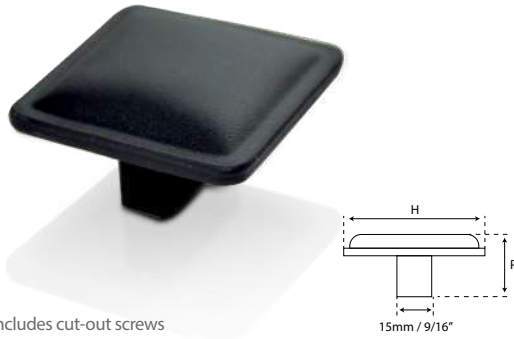
P810



Material: Níquel Satín - Pleather - Includes cut-out screws
Material: Satin Nickel - Tacto piel - Incluye tornillos recortables

CODE / CÓDIGO	FINISH / ACABADO	C	L	
P81096	● Black Leather / Piel Negra	96mm (3-3/4")	107mm (4-3/16")	10
P810128	● Black Leather / Piel Negra	128mm (5-1/16")	135mm (5-5/16")	10

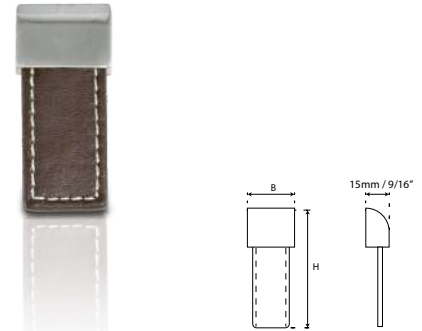
J555



Material: Pleather- Includes cut-out screws
Material: Tacto piel - Incluye tornillos recortables

CODE / CÓDIGO	FINISH / ACABADO	H	P	
J555-44AL	● Brown Leather / Piel Café	44mm (1-3/4")	18mm (11/16")	1/40
J555-70AL	● Brown Leather / Piel Café	70mm (2-3/4")	20mm (13/16")	1/30

P811



Material: Níquel Satín- Pleather- Includes cut-out screws
Material: Satin Nickel -Tacto piel- Incluye tornillos recortables

CODE / CÓDIGO	FINISH / ACABADO	B	H	
P811	● Brown Leather / Piel Café	22mm (7/8")	55mm (2-3/16")	50

J556



Material: Níquel Satín- Pleather - Includes cut-out screws
Material: Satin Nickel- tacto piel- Incluye tornillos recortables

CODE / CÓDIGO	FINISH / ACABADO	B	H	
J556-SLBN	● Brown Leather / Piel Café	27mm (1-1/16")	14mm (9/16")	1/30

J551



Material: Níquel Satín- Pleather - Includes cut-out screws
Material: Satin Nickel - Tacto piel - Incluye tornillos recortables

CODE / CÓDIGO	FINISH / ACABADO	C	L	
J551-160SLBN	● Brown Leather / Piel Café	160mm (6-5/16")	190mm (7-1/2")	1/30





W436



Material: Stainless Steel 304 - Wood- Includes cut-out screws
Material: Acero Inoxidable 304 -Madera- Incluye tornillos recortables

CODE / CÓDIGO	FINISH / ACABADO	B	P	
W436	● Satin / Satín	21mm (13/16")	30mm (1-3/16")	20/100

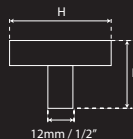
W209



Material: Stainless Steel 304 - Wood- Includes cut-out screws
Material: Acero Inoxidable 304 -Madera- Incluye tornillos recortables

CODE / CÓDIGO	FINISH / ACABADO	P	H	
W209x20	● Satin / Satín	28mm (1-1/8")	20mm (13/16")	20/200
W209x24	● Satin / Satín	29mm (1-1/8")	24mm (15/16")	20/200
W209X29	● Satin / Satín	35mm (1-3/8")	29mm (1-1/8")	10/100

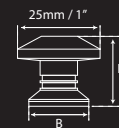
TP13025MM



Material: Stainless Steel 304 - Includes cut-out screws
Material: Acero Inoxidable 304 - Incluye tornillos recortables

CODE / CÓDIGO	FINISH / ACABADO	P	H	
TP13025MM	● Satin / Satín	20mm (13/16")	25mm (1")	10/100

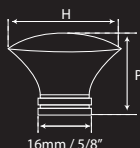
W125



Material: Stainless Steel 304 - Includes cut-out screws
Material: Acero Inoxidable 304- Incluye tornillos recortables

CODE / CÓDIGO	FINISH / ACABADO	B	P	
W125X25	● Satin / Satín	18mm (11/16")	20mm (13/16")	15/150
W125X30	● Satin / Satín	21mm (13/16")	23mm (7/8")	10/100

W127



Material: Stainless Steel 304 - Includes cut-out screws
Material: Acero Inoxidable 304 - Incluye tornillos recortables

CODE / CÓDIGO	FINISH / ACABADO	P	H	
W127X25	● Satin / Satín	23mm (7/8")	25mm (1")	25/250
W127X30	● Satin / Satín	26mm (1")	30mm (1-3/16")	10/100

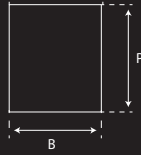
W158



Material: Stainless Steel 304 - Includes cut-out screws
Material: Acero Inoxidable 304- Incluye tornillos recortables

CODE / CÓDIGO	FINISH / ACABADO	P	H	
W158X20	● Satin / Satín	24mm (15/16")	19mm (3/4")	25/250
W158X25	● Satin / Satín	30mm (1-3/16")	25mm (1")	25/250

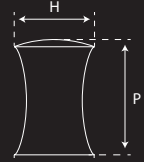
W117



Material: Stainless Steel 304 - Includes cut-out screws
Material: Acero Inoxidable 304- Incluye tornillos recortables

CODE / CÓDIGO	FINISH / ACABADO	P	H	
W117X15	● Satin / Satin	23mm (7/8")	15mm (9/16")	10/100
W117X20	● Satin / Satin	29mm (1-1/8")	20mm (13/16")	10/100
W117X25	● Satin / Satin	30mm (1-3/16")	25mm (1")	10/100

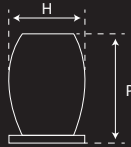
W119



Material: Stainless Steel 304 - Includes cut-out screws
Material: Acero Inoxidable 304- Incluye tornillos recortables

CODE / CÓDIGO	FINISH / ACABADO	P	H	
W119X15	● Satin / Satin	32mm (1-1/4")	15mm (9/16")	10/100
W119X20	● Satin / Satin	32mm (1-1/4")	20mm (13/16")	10/100
W119X25	● Satin / Satin	36mm (1-7/16")	25mm (1")	10/100

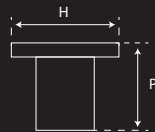
W123



Material: Stainless Steel 304 - Wood- Includes cut-out screws
Material: Acero Inoxidable 304-Madera- Incluye tornillos recortables

CODE / CÓDIGO	FINISH / ACABADO	P	H	
W123X15	● Satin / Satin	22mm (7/8")	15mm (9/16")	10/100
W123X20	● Satin / Satin	25mm (1")	20mm (13/16")	10/100
W123X25	● Satin / Satin	30mm (1-3/16")	25mm (1")	10/100

W121

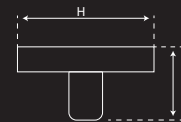


Material: Stainless Steel 304 - Wood- Includes cut-out screws
Material: Acero Inoxidable 304 - Madera- Incluye tornillos recortables

CODE / CÓDIGO	FINISH / ACABADO	P	H	
W121X15	● Satin / Satin	18mm (11/16")	15mm (9/16")	25/250
W121X20	● Satin / Satin	20mm (13/16")	20mm (13/16")	25/250



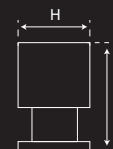
W021



Material: Stainless Steel 304 - Includes cut-out screws
Material: Acero Inoxidable 304- Incluye tornillos recortables

CODE / CÓDIGO	FINISH / ACABADO	P	H	
W021X25	● Satin / Satin	22mm (7/8")	25mm (1")	25/100
W021X30	● Satin / Satin	22mm (7/8")	30mm (1-3/16")	20/100

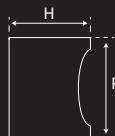
W426



Material: Stainless Steel 304 - Includes cut-out screws
Material: Acero Inoxidable 304- Incluye tornillos recortables

CODE / CÓDIGO	FINISH / ACABADO	P	H	
W426X15	● Satin / Satin	30mm (1-3/16")	15mm (9/16")	20/200
W426X20	● Satin / Satin	33mm (1-5/16")	20mm (13/16")	20/200
W426X25	● Satin / Satin	36mm (1-7/16")	25mm (1")	10/100
W426X15PSS	● Polished / Pulido	26mm (1")	15mm (9/16")	20/200
W426X20PSS	● Polished / Pulido	33mm (1-5/16")	20mm (13/16")	20/200
W426X25PSS	● Polished / Pulido	36mm (1-7/16")	25mm (1")	10/100

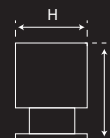
W116



Material: Stainless Steel 304 - Includes cut-out screws
Material: Acero Inoxidable 304- Incluye tornillos recortables

CODE / CÓDIGO	FINISH / ACABADO	P	H	
W116X15	● Satin / Satin	22mm (7/8")	15mm (9/16")	25/250
W116X20	● Satin / Satin	25mm (1")	20mm (13/16")	20/200
W116X25	● Satin / Satin	30mm (1-3/16")	25mm (1")	10/100
W116X30	● Satin / Satin	32mm (1-1/4")	30mm (1-3/16")	10/100

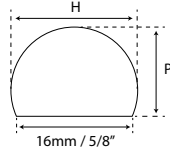
W118



Material: Stainless Steel 304 - Includes cut-out screws
Material: Acero Inoxidable 304- Incluye tornillos recortables

CODE / CÓDIGO	FINISH / ACABADO	P	H	
W118X15	● Satin / Satin	26mm (1")	15mm (9/16")	10/100
W118X20	● Satin / Satin	33mm (1-5/16")	20mm (13/16")	10/100
W118X25	● Satin / Satin	36mm (1-7/16")	25mm (1")	10/100

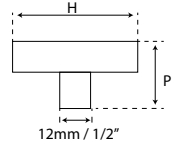
W325



Material: Stainless Steel 304 - Includes cut-out screws
Material: Acero Inoxidable 304- Incluye tornillos recortables

CODE / CÓDIGO	FINISH / ACABADO	P	H	
W325X30	● Satin / Satín	30mm (1-3/16")	23mm (7/8")	25/250
W325X35	● Satin / Satín	35mm (1-3/8")	25mm (1")	20/200

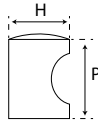
WFH341



Material: Stainless Steel 304 - Includes cut-out screws
Material: Acero Inoxidable 304- Incluye tornillos recortables

CODE / CÓDIGO	FINISH / ACABADO	P	H	
WFH341	● Satin / Satín	30mm (1-3/16")	35mm (1-3/8")	25/250

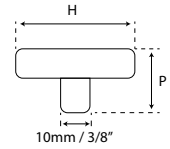
W126



Material: Stainless Steel 304 - Includes cut-out screws
Material: Acero Inoxidable 304- Incluye tornillos recortables

CODE / CÓDIGO	FINISH / ACABADO	P	H	
W126X15	● Satin / Satín	25mm (1")	15mm (9/16")	25/250
W126X20	● Satin / Satín	29mm (1-1/8")	20mm (13/16")	20/200
W126X25	● Satin / Satín	30mm (1-3/16")	25mm (1")	10/100

WFH342

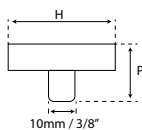


Material: Stainless Steel 304 - Includes cut-out screws
Material: Acero Inoxidable 304- Incluye tornillos recortables

CODE / CÓDIGO	FINISH / ACABADO	P	H	
WFH342	● Satin / Satín	30mm (1-3/16")	35mm (1-3/8")	20/200



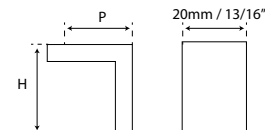
WFH339



Material: Stainless Steel 304 - Includes cut-out screws
Material: Acero Inoxidable 304- Incluye tornillos recortables

CODE / CÓDIGO	FINISH / ACABADO	P	H	
WFH339	● Satin / Satin	30mm (1-3/16")	20mm (13/16")	25/250
WFH339X24.5	● Satin / Satin	30mm (1-3/16")	24.5mm (15/16")	20/200

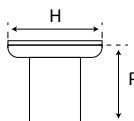
WFH336



Material: Stainless Steel 304 - Includes cut-out screws
Material: Acero Inoxidable 304- Incluye tornillos recortables

CODE / CÓDIGO	FINISH / ACABADO	P	H	
WFH336	● Satin / Satin	35mm (1-3/8")	35mm (1-3/8")	20/100

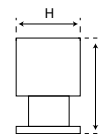
W129



Material: Stainless Steel 304 - Includes cut-out screws
Material: Acero Inoxidable 304- Incluye tornillos recortables

CODE / CÓDIGO	FINISH / ACABADO	P	H	
W129X20	● Satin / Satin	17mm (11/16")	20mm (13/16")	25/100
W129X25	● Satin / Satin	21mm (13/16")	25mm (1")	20/200
W129X30	● Satin / Satin	25mm (1")	30mm (1-3/16")	10/100
W129X20PSS	● Polished / Pulido	17mm (11/16")	20mm (13/16")	25/100
W129X25PSS	● Polished / Pulido	21mm (13/16")	25mm (1")	20/200
W129X30PSS	● Polished / Pulido	25mm (1")	30mm (1-3/16")	10/100

W326

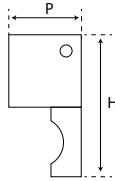


Material: Stainless Steel 304 - Includes cut-out screws
Material: Acero Inoxidable 304- Incluye tornillos recortables

CODE / CÓDIGO	FINISH / ACABADO	P	H	
W326X10	● Satin / Satin	25mm (1")	10mm (3/8")	30/300
W326X15	● Satin / Satin	29mm (1-1/8")	15mm (9/16")	25/300
W326X20	● Satin / Satin	33mm (1-5/16")	20mm (13/16")	20/200
W326X25	● Satin / Satin	35mm (1-3/8")	25mm (1")	10/100
W326X15PSS	● Polished / Pulido	29mm (1-1/8")	15mm (9/16")	25/300
W326X20PSS	● Polished / Pulido	33mm (1-5/16")	20mm (13/16")	20/200
W326X25PSS	● Polished / Pulido	35mm (1-3/8")	25mm (1")	10/100



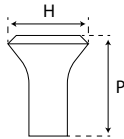
WFH333



Material: Stainless Steel 304 - Includes cut-out screws
Material: Acero Inoxidable 304- Incluye tornillos recortables

CODE / CÓDIGO	FINISH / ACABADO	P	H	
WFH333	● Satin / Satin	20mm (13/16")	40mm (1-9/16")	20/200

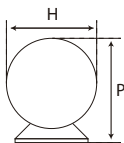
W332



Material: Stainless Steel 304 -Wood- Includes cut-out screws
Material: Acero Inoxidable 304 -Madera- Incluye tornillos recortables

CODE / CÓDIGO	FINISH / ACABADO	P	H	
W332X15	● Satin / Satin	24mm (15/16")	15mm (9/16")	25/250
W332X20	● Satin / Satin	28mm (1-1/8")	20mm (13/16")	25/250
W332X25	● Satin / Satin	32mm (1-1/4")	25mm (1")	20/200

W132



Material: Stainless Steel 304 -Wood- Includes cut-out screws
Material: Acero Inoxidable 304 -Madera- Incluye tornillos recortables

CODE / CÓDIGO	FINISH / ACABADO	P	H	
W132X20	● Satin / Satin	25mm (1")	20mm (13/16")	25/250
W132X25	● Satin / Satin	30mm (1-3/16")	25mm (1")	20/200
W132X30	● Satin / Satin	35mm (1-3/8")	30mm (1-3/16")	10/100

